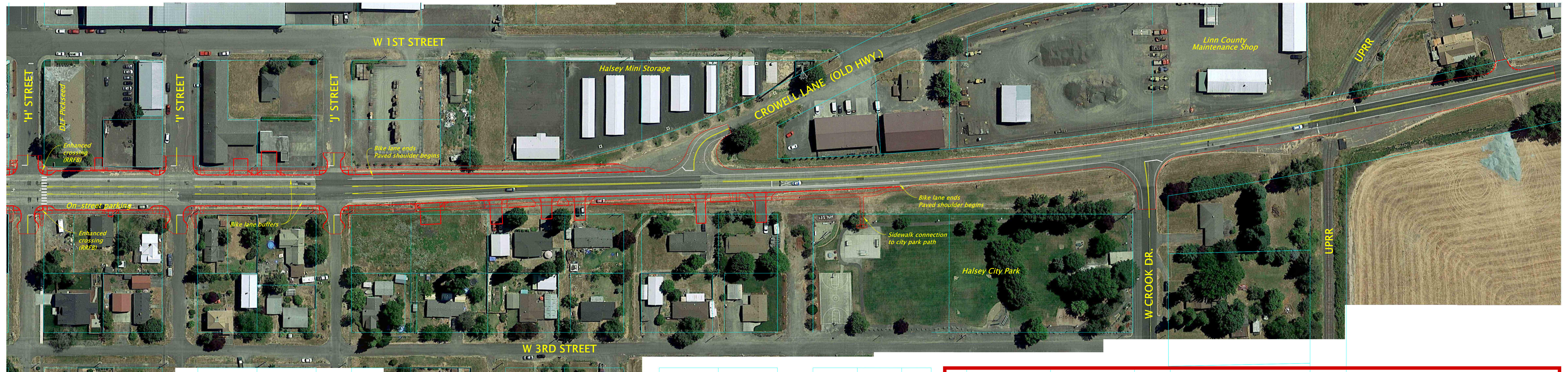
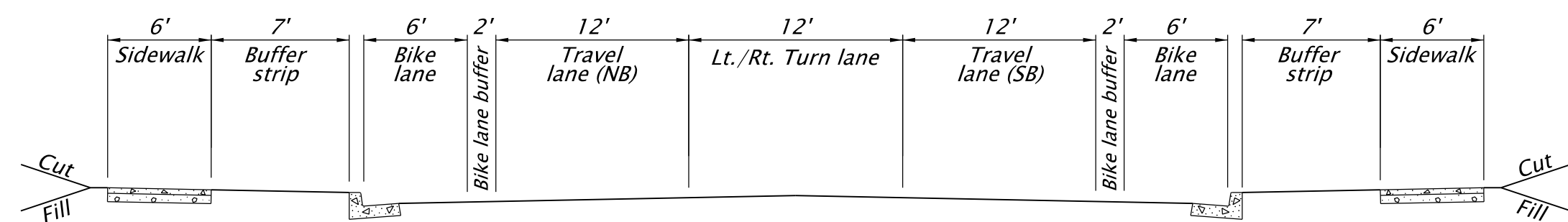


# OR99E: AMERICAN DRIVE TO SOUTH CITY LIMITS (HALSEY)

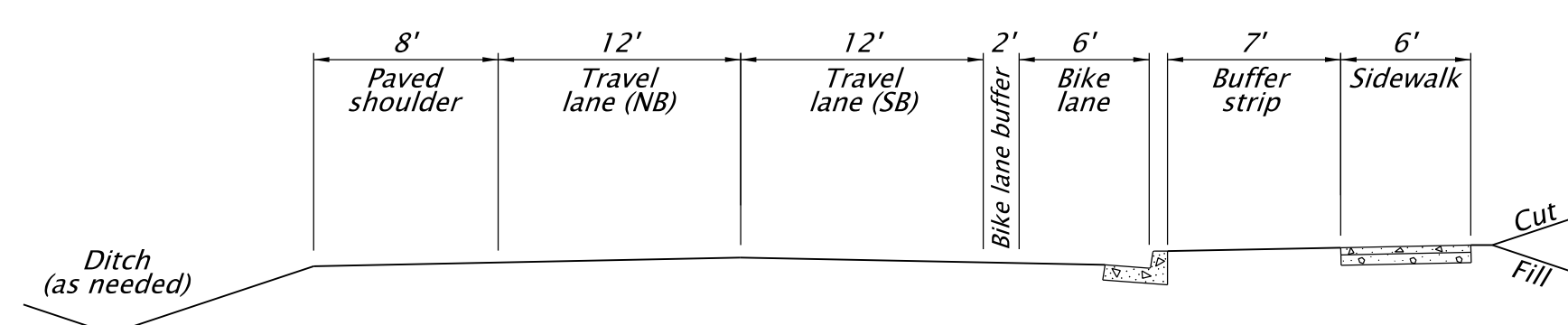
## 'H' STREET TO END OF PROJECT



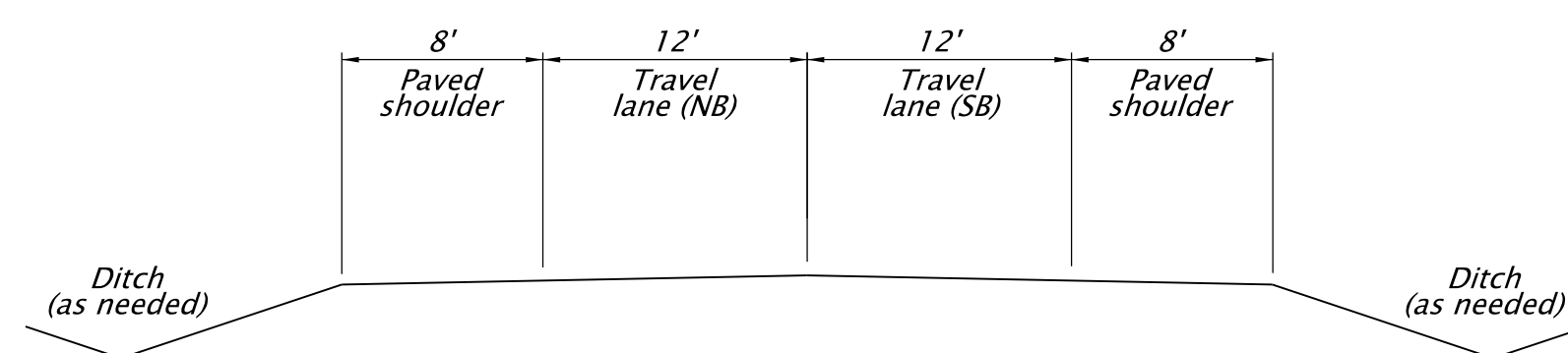
**Proposed concept designs. Information only.**



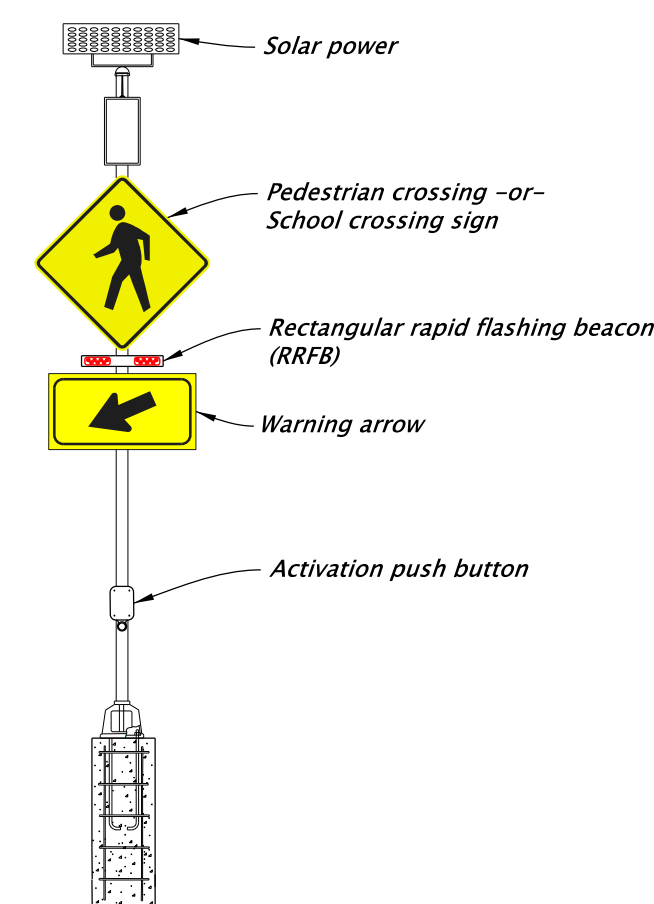
TYPICAL SECTION: NORTH OF 'J' STREET



TYPICAL SECTION: 'J' STREET TO HALSEY CITY PARK



TYPICAL SECTION: HALSEY CITY PARK TO END OF PROJECT



TYPICAL RECTANGULAR RAPID FLASHING BEACON (RRFB) SIGNAL FOR ENHANCED CROSSINGS



**DAVID EVANS AND ASSOCIATES INC.**  
 530 CENTER ST. NE SUITE 605  
 SALEM OREGON 97301  
 Phone: 503.361.8635