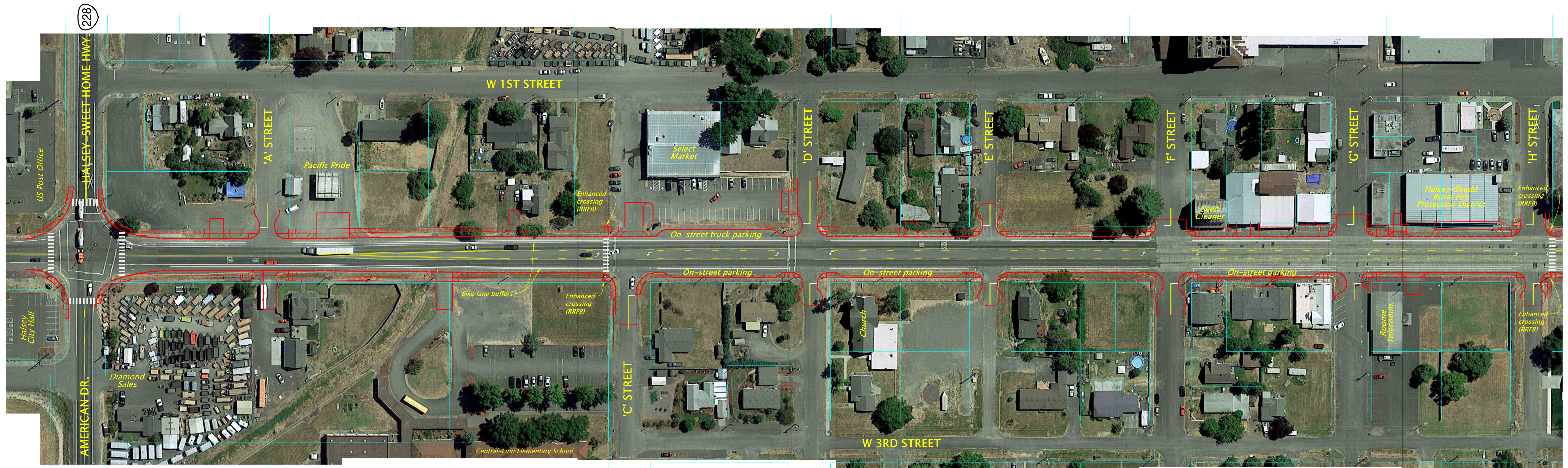
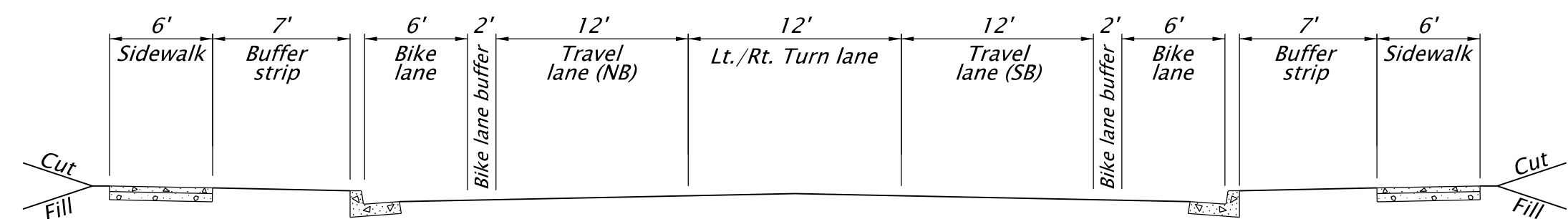


# OR99E: AMERICAN DRIVE TO SOUTH CITY LIMITS (HALSEY)

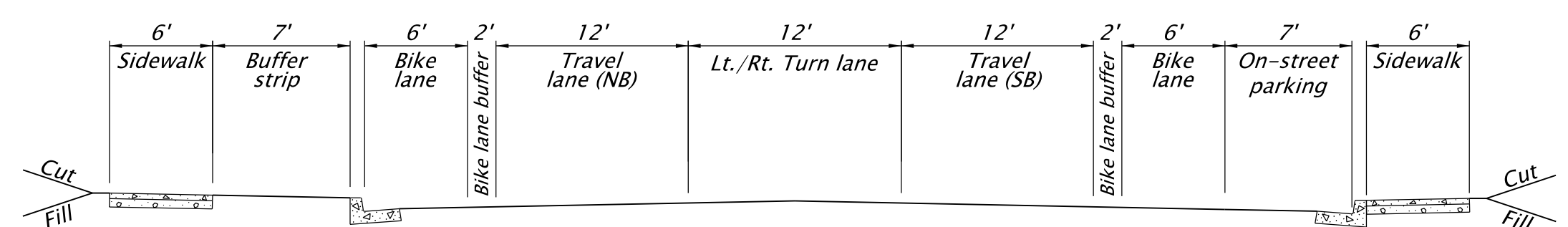
## AMERICAN DRIVE TO 'H' STREET



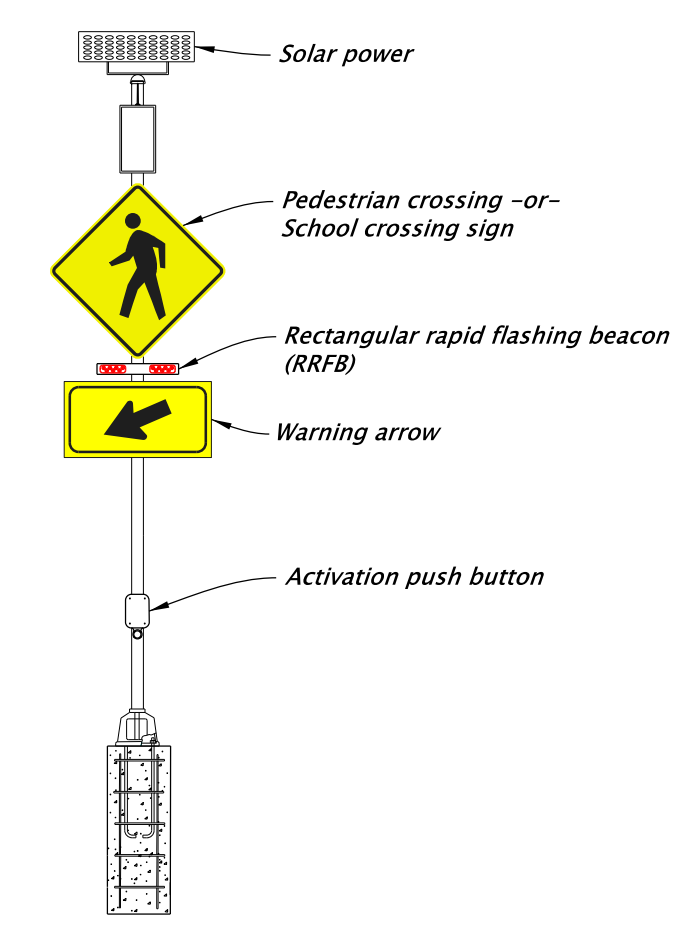
**Proposed concept designs. Information only.**



TYPICAL SECTION: NO ON-STREET PARKING



TYPICAL SECTION: ON-STREET PARKING (RT. SIDE)



TYPICAL RECTANGULAR RAPID FLASHING BEACON (RRFB) SIGNAL FOR ENHANCED CROSSINGS



**DAVID EVANS AND ASSOCIATES INC.**  
 530 CENTER ST. NE SUITE 605  
 SALEM OREGON 97301  
 Phone: 503.361.8635